



Department of
Environmental
Conservation

DECinfo Locator

A new way to find DEC information

October 2019

Project Goal

Create a **user-friendly**, map interface where the user can easily locate **DEC documents and information** about the **environmental quality** of specific sites, as well as **outdoor recreational** opportunities.

Increase Transparency

Access to Documents and Data



One Map- Two Views



Department of
Environmental
Conservation



DECinfo Locator

Base Map:

Search

Tools

DEC Information Locator

Environmental Quality

Outdoor Activity

Permits and Registrations

☐ Check / Uncheck all☐  Municipal Separate Storm Sewer System (MS4)☐  MS4 Extended☐  Hazardous Waste Treatment, Storage & Disposal Facilities☐  Title V Air Facility☐  Air State Facility☐  Hazardous Waste Reduction Planning Program Generators☐  Wastewater Facilities☐  Multi-Sector General Permits (MSGP)☐  Petroleum Bulk Storage Facilities

Environmental Cleanup

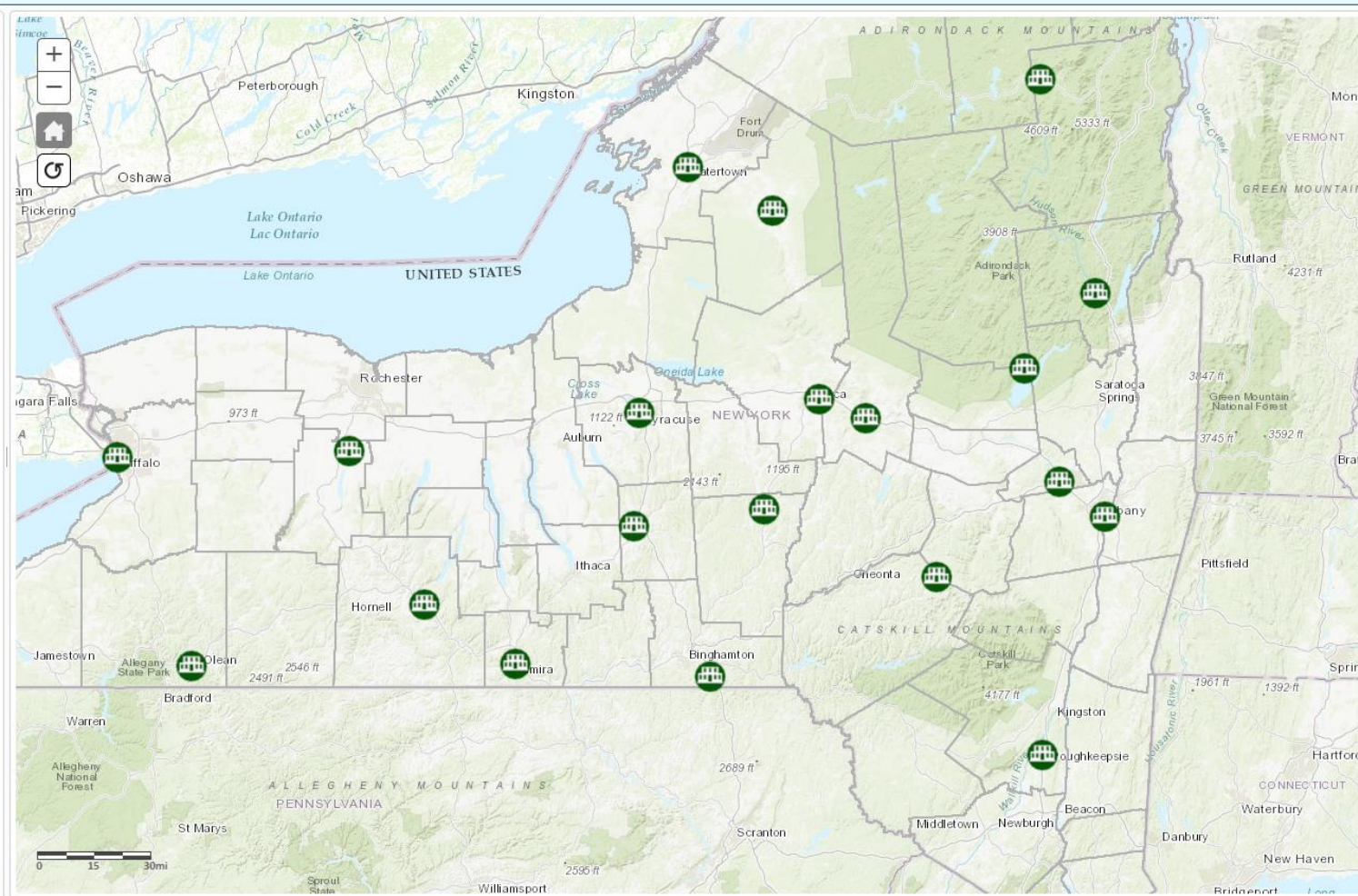
Environmental Monitoring

Public Involvement

Environmentally Sensitive Areas

Legal Information

Reference Layers



Search

Tools

DEC Information Layers

Environmental QualityOutdoor Activity

Land-related Activities

☐ Check / Uncheck all

Symbols with a blue halo denote accessibility.

☐ DEC Lands

☐ Conservation Easements

☐ DEC Recreational Assets

Fire Tower

Fishing

Lean-to

Parking

Picnic Area

Primitive Campsite

Scenic Vista

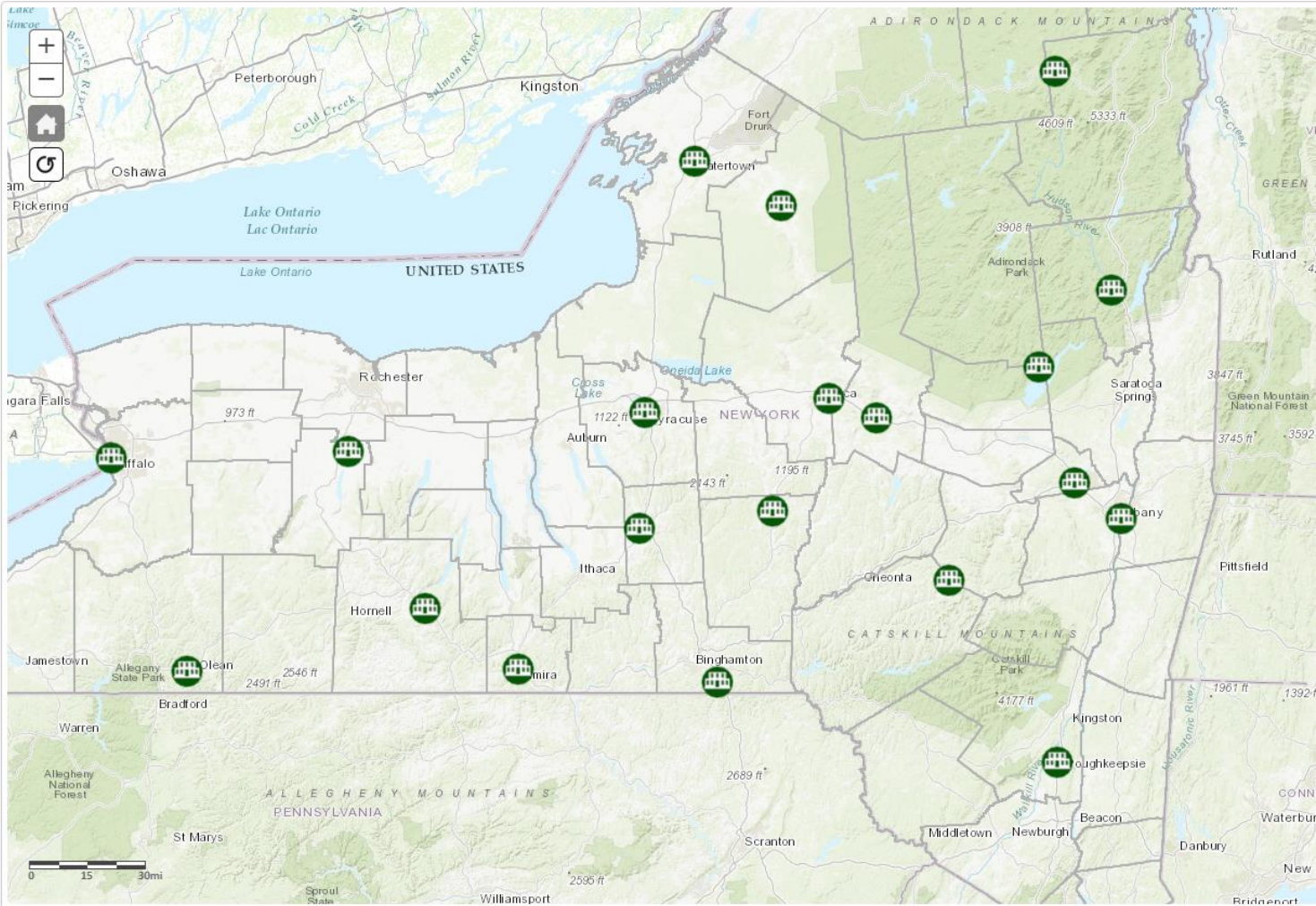
Viewing Area

Campgrounds

Trails

Water-related Activities

Reference Layers



Environmental Quality

- **Permits and Registrations (15)**
- **Environmental Cleanup (2)**
- **Environmental Monitoring (7)**
- **Public Involvement (7)**
- **Environmentally Sensitive Areas (2)**
- **Legal Information (2)**



Outdoor Activity

- Land-related Activities (6)
- Campgrounds (4)
- Trails (7)
- Water-related Activities (5)



Core Functionality



Icon Pop-up Box

Deep link into
online Registry
record

NEW YORK STATE DEPARTMENT OF ENVIRONMENTAL CONSERVATION

[Home](#) » [Mining and Reclamation Home](#) » [Mined Land Reclamation Searchable Database](#) » [Mines Data Search](#)

Search Parameters: [\[Go Back\]](#)

- Mine ID like 70077

[Export XLS](#) [Export CSV](#) [Export KML](#)

Record Count: 1 Rows: 1 to 1

Mine ID	Permittee Name	Mine Name	First Name	Last Name	Address 1	Address 2	City	State	Zip 1	Zip 2	Phone	Status
70077	T H Kinsella Inc	Kinsella Quarry - NYS Route 5	Thomas	Kinsella	PO Box 7		Fayetteville	NY	13066		(315) 637-3390	Permitted

Record Count: 1 Rows: 1 to 1

[Export XLS](#) [Export CSV](#) [Export KML](#)

Search


Tools

DEC Information Layers

Environmental Quality

Outdoor

Permits and Registrations

☐ Check / Uncheck all☐ ☐ Municipal Separate Storm
(MS4)☐ MS4 Extended☐ ☐ Hazardous Waste Treatment
Disposal Facilities☒  Title V Air Facility☐  Air State Facility☐  Hazardous Waste Redu
Program Generators☐  Wastewater Facilities☐  Multi-Sector General Pe☐  Petroleum Bulk Storage

Environmental Cleanup

New York State Department of Environmental Conservation
Facility DEC ID: 7313800015



PERMIT
Under the Environmental Conservation Law (ECL)

IDENTIFICATION INFORMATION

Permit Type: Air Title V Facility
Permit ID: 7-3138-00015/00020
Effective Date: 11/03/2006 Expiration Date: 11/01/2011

Permit Issued To: L & J G STICKLEY INC
PO BOX 480
MANLIUS, NY 13104-0480

Contact: ALFRED J AUDI
L. & J. G. STICKLEY, INC.
STICKLEY DRIVE, PO BOX 480
MANLIUS, NY 13104

Facility: L & J G STICKLEY INC
1 STICKLEY DR
MANLIUS, NY 13104

Contact: JUSTIN S DUSSEAU
L & J G STICKLEY INC
1 STICKLEY DR PO BOX 480
MANLIUS, NY 13104-0480
(315) 682-5500

Description:

By acceptance of this permit, the permittee agrees that the permit is contingent upon strict compliance with the ECL, all applicable regulations, the General Conditions specified and any Special Conditions



File Edit View History Bookmarks Tools Help

Most Visited Build your mode

NEW YORK STATE DEPARTMENT

DECinfo Locator

Search

Tools

DEC Information Layers

Environmental Quality Outdoor

Permits and Registrations

☐ Check / Uncheck all

☐ Municipal Separate Storm (MS4)

☐ MS4 Extended

☐ Hazardous Waste Treatment Disposal Facilities

☐ Title V Air Facility

☐ Air State Facility

☐ Hazardous Waste Reduction Program Generators

☒ Wastewater Facilities

☐ Multi-Sector General Permits

Environmental Cleanup

Environmental Monitoring

Public Involvement

Environmentally Sensitive Areas

Legal Information

Reference Layers

Index of /data/IF/SPDES/NY021

SPDES PERMIT RENEWAL

8/30/2017

Permittee Name: ALBANY COUNTY AIRPORT AUTHORITY

Facility Name: ALBANY INTERNATIONAL AIRPORT

Ind. Code: 4581 County: ALBANY

DEC ID: 4-0126-00140/00003 SPDES No.: NY0212245

Permit Effective Date: 3/1/2018

Permit Expiration Date: 2/28/2023

Dear Permittee,

The State Pollutant Elimination System (SPDES) permit renewal for the facility referenced above is approved with the new effective and expiration dates. This letter together with the previous valid permit for this facility effective on 03/13/2013 and any subsequent modifications constitute authorization to discharge wastewater in accordance with all terms, conditions and limitations specified in the previously issued permit(s).

As a reminder, SPDES permits are renewed at a central location in Albany in order to make the process more efficient. All other concerns with your permit, including applications for permit modification or transfer to a new owner, a name change, and other questions, should be directed to:

Regional Permit Administrator
NYSDEC Region 4 Headquarters
1130 N Westcott Rd
Schenectady, NY 12306
(518) 357-2452

If you have already filed an application for modification of your permit, it will be processed separately by that office.

Tools

Area Measure, Distance,
Near Me



Department of
Environmental
Conservation

Choose Layers


DEC Information Layers


Environmental Quality

Outdoor Activity

Permits and Registrations

☐ Check / Uncheck all

☒  **Municipal Separate Storm Sewer System (MS4)**


☐  MS4 Extended

☐  Hazardous Waste Treatment, Storage & Disposal Facilities

☐  Title V Air Facility

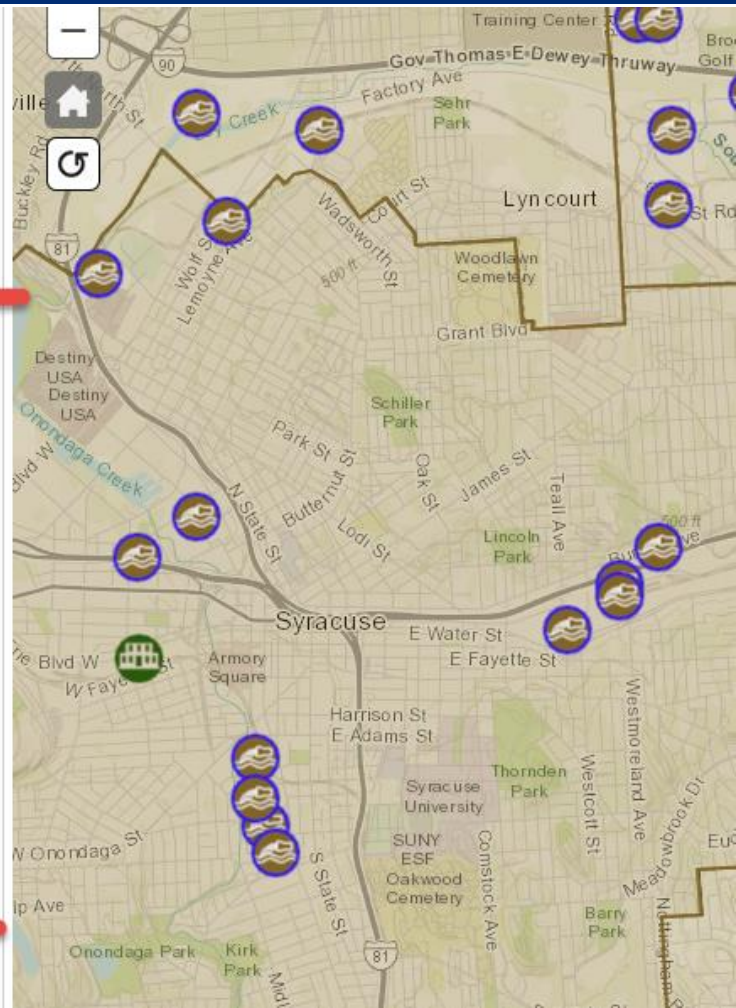
☐  Air State Facility

☐  Hazardous Waste Reduction Planning Program Generators

☐  Wastewater Facilities

☒  **Multi-Sector General Permits (MSGP)**

☐  Petroleum Bulk Storage Facilities





DECinfo Locator

Search

Tools



Measurement Tool

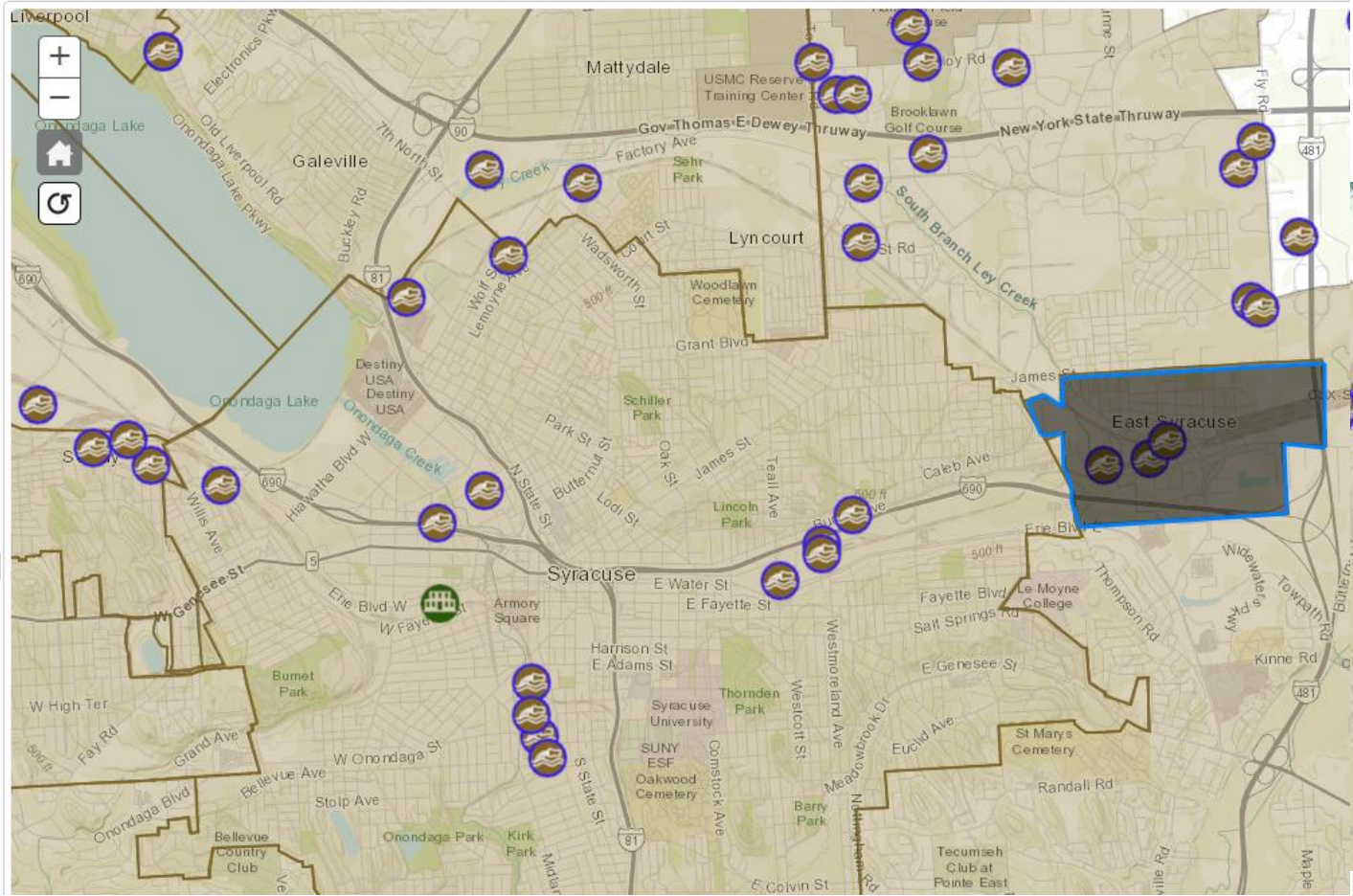


Measurement Result

982.9 Acres

Clear Result

The measurement tool is currently active. To interact with map features, deactivate it above.



Distance- measure between two points

NEW YORK STATE DEPARTMENT OF ENVIRONMENTAL CONSERVATION



DECinfo Locator

Search

Tools



Measurement Tool

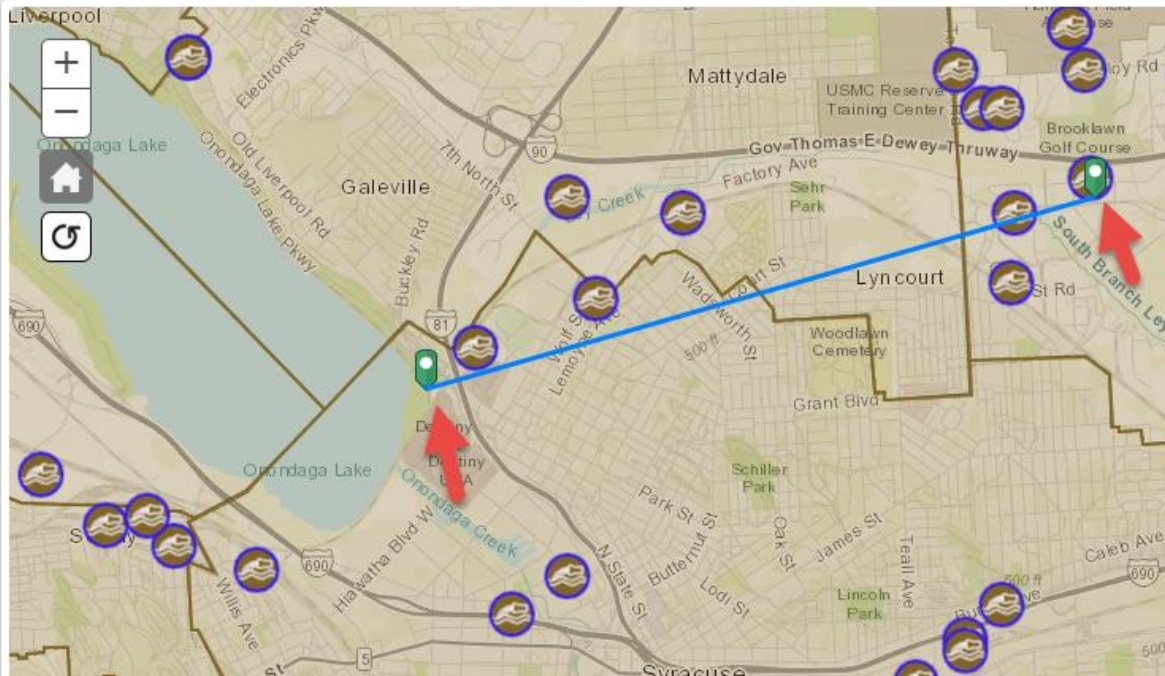


Measurement Result

3.84 Miles

Clear Result

The measurement tool is currently active. To interact with map features, deactivate it above.





DECinfo Locator

Base Map: Topographical Help

Search

Tools



Near Me Tool

Click on the map to select a point and choose a search radius. (Miles)

1 2 3 4 5 6 7 8 9 10

Municipal Separate Storm Sewer System MS4

1: NYR20A186

2: NYR20A156

3: NYR20A348

MS4 Extended

1: DEWITT

2: DEWITT

3: EAST SYRACUSE

4: SYRACUSE

MultiSector General Permits MSGP

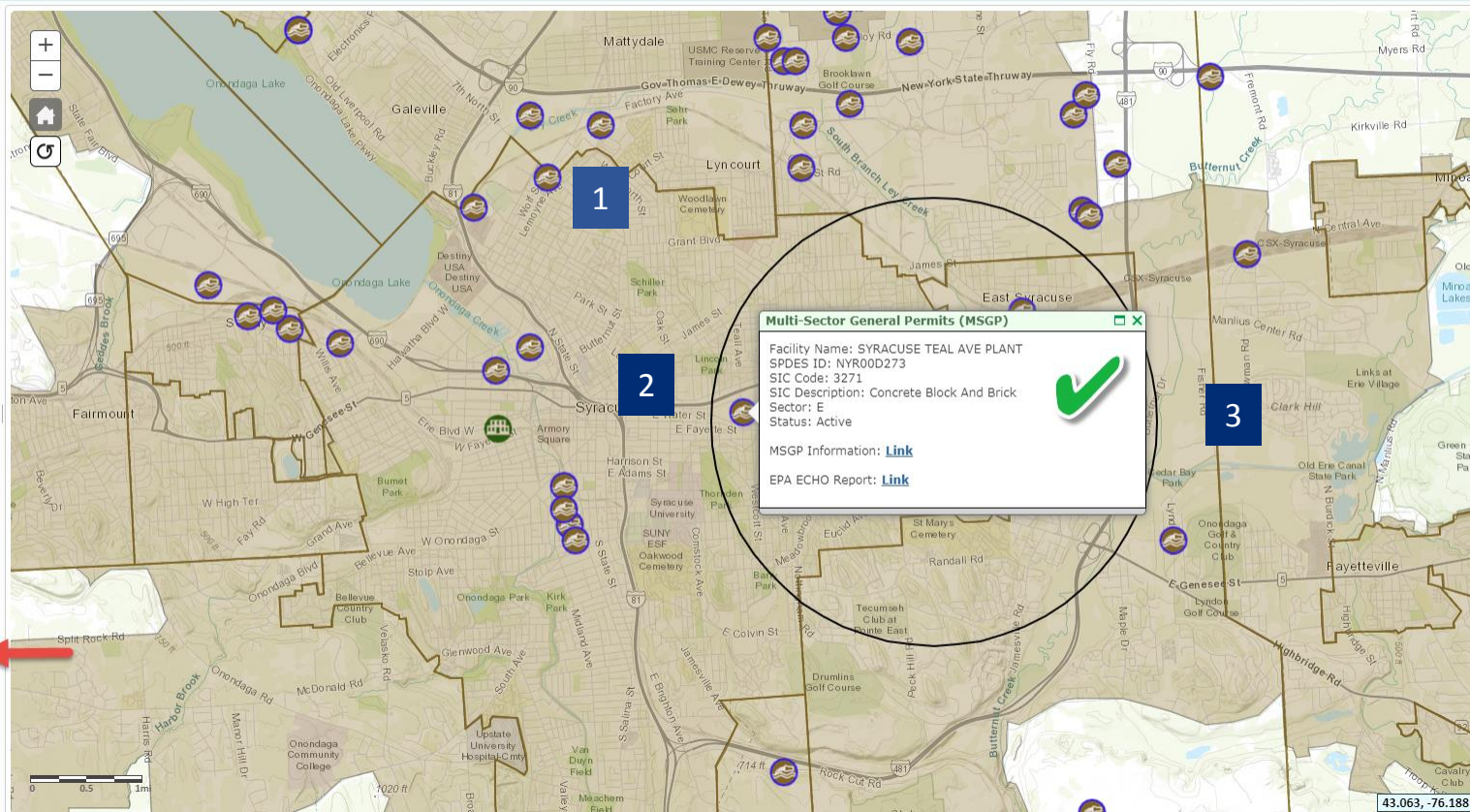
1: SYRACUSE TEAL AVE PLANT

2: TRANSFLO SYRACUSE TERMINAL

3: DEWITT YARD - PEAT STREET

DEC Information Layers

Reference Layers



Stoney Pond State Forest



icon key

- **Open for recreation:** Year-round.
- **Fee:** Free
- **Contact Information**
 - DEC Region Sherburne 7 Office: (607) 674-4017, M-F (8am - 4pm); email R7Forestry@dec.ny.gov
 - Emergency, Law Enforcement & Rangers: (518) 408-5850 or 911
- **Location:** Town of Nelson, Madison County
- **Wildlife Management Unit:** [7M](#)
- **Map:** [View Stoney Pond State Forest Map](#) || [View Same Map in PDF](#) || [View Campground Map in PDF](#) || [Google Earth](#) || [DECinfo Locator](#)



Stoney Pond State Forest consists of 1,469 acres and offers visitors an opportunity to view a range of different flora and fauna. The 44-acre Stoney Pond was constructed in the late 1950s to provide wildlife habitat.

Featured Activities

Paddling



General information on paddling includes how-to and safety tips and links to rules and regulations.

A parking area and hand launch site is located on the pond. No gas powered motors are permitted. A day use area is located adjacent to the ramp.

Important Links

[Hiking Safely](#)

[Hiking and Camping Rules](#)

Links Leaving DEC's Website

[State Land Use Regulations](#)

[Madison County Tourism Office](#)

PDF Help

For help with PDFs on this page, please call 607-674-4017.

Contact for this Page

NYSDEC Region 7
Sherburne Sub-office
2721 State Hwy 80
Sherburne, NY 13460
607-674-4017
[Send us an email](#)

This Page Covers



Outdoor Activity and Environmental Quality Together

Base Map

or Activity

Sites

Monitoring

ing

Boat Launch Sites (1 of 3)

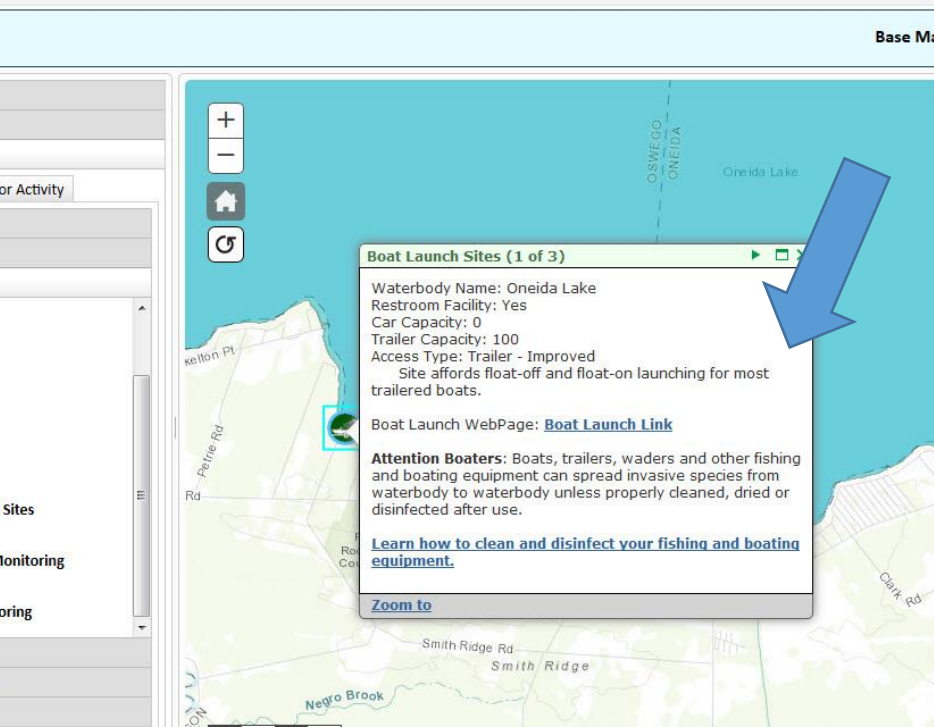
Waterbody Name: Oneida Lake
Restroom Facility: Yes
Car Capacity: 0
Trailer Capacity: 100
Access Type: Trailer - Improved
Site affords float-off and float-on launching for most trailered boats.

Boat Launch WebPage: [Boat Launch Link](#)

Attention Boaters: Boats, trailers, waders and other fishing and boating equipment can spread invasive species from waterbody to waterbody unless properly cleaned, dried or disinfected after use.

[Learn how to clean and disinfect your fishing and boating equipment.](#)

[Zoom to](#)



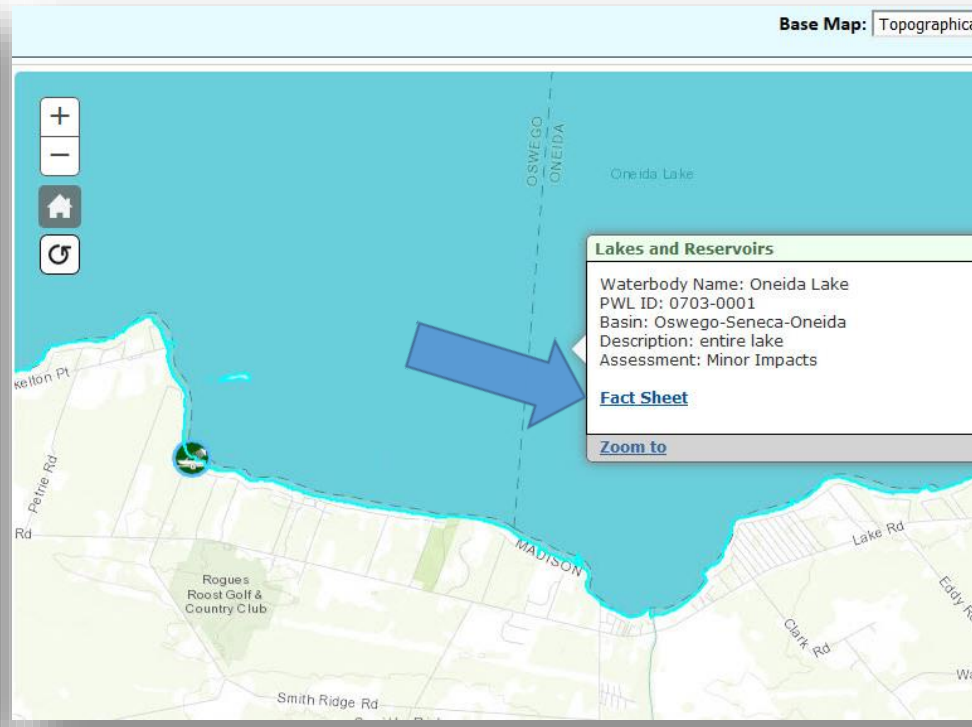
Base Map: Topographic

Lakes and Reservoirs

Waterbody Name: Oneida Lake
PWL ID: 0703-0001
Basin: Oswego-Seneca-Oneida
Description: entire lake
Assessment: Minor Impacts

[Fact Sheet](#)

[Zoom to](#)



Department of Environmental Conservation

[Recreation](#)
[Nature](#)
[Prevent & Control Pollution](#)
[Regulatory](#)
[News & Learning](#)
[Search](#)

DECinfo Locator

DECinfo Locator Layers

[Home](#) » [Publications, Forms, Maps](#) » [Maps](#) » [Interactive Online Maps](#) » DECinfo Locator

DECinfo Locator

Click to launch the DECinfo Locator Map - search or zoom into the map until the layer list names turn black.

DECinfo Locator is an interactive map that lets you access many DEC documents and public data about the environmental quality of specific sites in New York State, as well as information about sites for outdoor recreation. With more than 50 data layers available, this is the first application that shows both environmental quality monitoring and natural resource information together in one place.

This tool and available information are maintained by the NYS Department of Environmental Conservation. **Icons represent the availability of information, not necessarily the presence of contamination or other problems.**

Tell Us What You Think

Please take our [short feedback survey](#) so we can continue making improvements. More information layers will be continuously be added, so let us know which ones you would like included.

How to Use the Map

*****Be sure to search for a location or zoom into an area of the map until the layer list names turn black.** You can then activate the layers you want and icons will appear on the map.

- [Help Video \(YouTube\)](#) * **Good resource before getting started**
- [Help Document \(PDF\)](#)

Find on this Page

[How To Use the Map](#)
[Terms and Conditions for Using Map](#)
[Why Many Icons](#)
[Contact Us/Report Data Problems](#)
[Other GIS Resources](#)

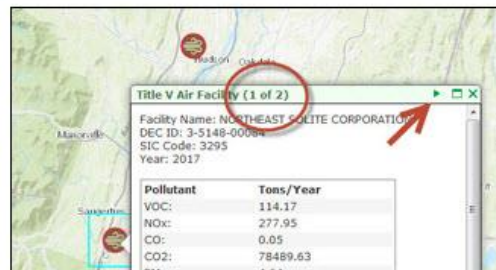
Links Leaving DEC's Website


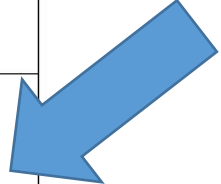




[Launch DECinfo Locator Map](#)
[Feedback Survey](#)

Contact for this Page

Office of
Communication
Services
625 Broadway
Albany, NY
12233-4500
518-402-8013
Send us an email

This Page Covers



(TSDFs)				
Air State Facility Permits (ASF) 	State Facility Permits are issued to facilities considered to be mid-sized. They have lower potential emissions, fewer requirements than Title V facilities, and they meet the criteria of Subpart 201-5.	Issued permit	Daily	
	Title V Permits are issued to facilities that are major sources of air emissions. These facilities are usually considered to be the largest in the state and meet the criteria of Subpart 201-6.	Issued permit and permit review report	Daily	
Hazardous Waste Reduction Planning Program Generators 	Facilities that release hazardous wastes and toxic substances into the environment must reduce, to the maximum extent possible, the volume or quantity and toxicity of waste. Facilities that generate 25 tons or more of certain hazardous wastes per calendar year are subject to the law and must submit a hazardous waste reduction plan update annually.	Facility name, type, EPA ID, and link to more information	Annually	
Wastewater Facilities (SPDES) 	New York's State Pollutant Discharge Elimination System (SPDES) program is designed to eliminate the pollution of New York waters and to maintain New York's waters with reasonable purity standards and the highest quality of water possible - consistent with: public health, public enjoyment of the resource, protection and propagation of fish and wildlife, and industrial development in the state.	Permit for individual facilities	Daily	
Multi-Sector General Permit (MSGP) 	Point source stormwater discharges from certain industrial activities to navigable waters are unlawful unless they are authorized by a National Pollutant Discharge Elimination System (NPDES) permit or by a state permit program. Facilities must be issued an individual New York's State Pollution Discharge Elimination System (SPDES) permit, obtain coverage under the Multi-Sector General Permit for Stormwater Discharges Associated with Industrial Activity (MSGP), or provide certification to DEC that industrial activities are not exposed to stormwater. This layer contains data for MSGP facilities.	Basic details about facility and links to more information	Quarterly	
Petroleum Bulk Storage Facilities 	The Petroleum Bulk Storage program applies to properties which have, except for tank systems that are specifically exempted: <ul style="list-style-type: none"> • One or more tank systems that are designed to store a combined capacity of more than 1,100 gallons or more of petroleum in aboveground and/or underground storage tanks; or • One or more underground tank systems that are designed to store 110 or more gallons of petroleum. Any such facilities must register all tank systems with DEC and must be managed in compliance with	DEC database record for individual facilities	Daily	

Upcoming Enhancements

Layer Info Bubbles 

More Data Layers

Separate Recreational Assets

Downloadable Data Sets?

- Not yet. Use:
- Open NY Data Portal- <https://data.ny.gov/>
- NYS GIS Clearinghouse- <https://gis.ny.gov/>



Recap

What is the first thing you should do after you launch DECinfo Locator?

- **Search for or zoom to a specific location on the map**

What tool is the best option to examine data from multiple data layers in a specific area of the map?

- **Near Me tool. Other tools include area measurement and distance**

Recap

How many layers are available in DECinfo Locator?

- **More than 50 interactive layers are available, with more being added**

Where can you download some of the available layers?

- **NYS GIS Clearinghouse and NY Open Data Portal**



Thank You

Cathy.Kittle@dec.ny.gov

Scott.Donnelly@dec.ny.gov

518-402-8013

DECInfoLocator@dec.ny.gov

Connect with us

www.facebook.com/NYSDEC

twitter.com/NYSDEC

www.instagram.com/nysdec/

www.linkedin.com

<https://on.ny.gov/DECinfoLocator>



Department of
Environmental
Conservation